

Great Arc Bike Route



Great Arc Bike Route Map created with help from the following:



For more information, please visit the following websites:
www.trekbikes.com
www.glacierlandrc.org
www.foth.com
www.lnrp.org
www.escarpmentnetwork.org
www.eastcentralrpc.org
www.baylakerpc.org

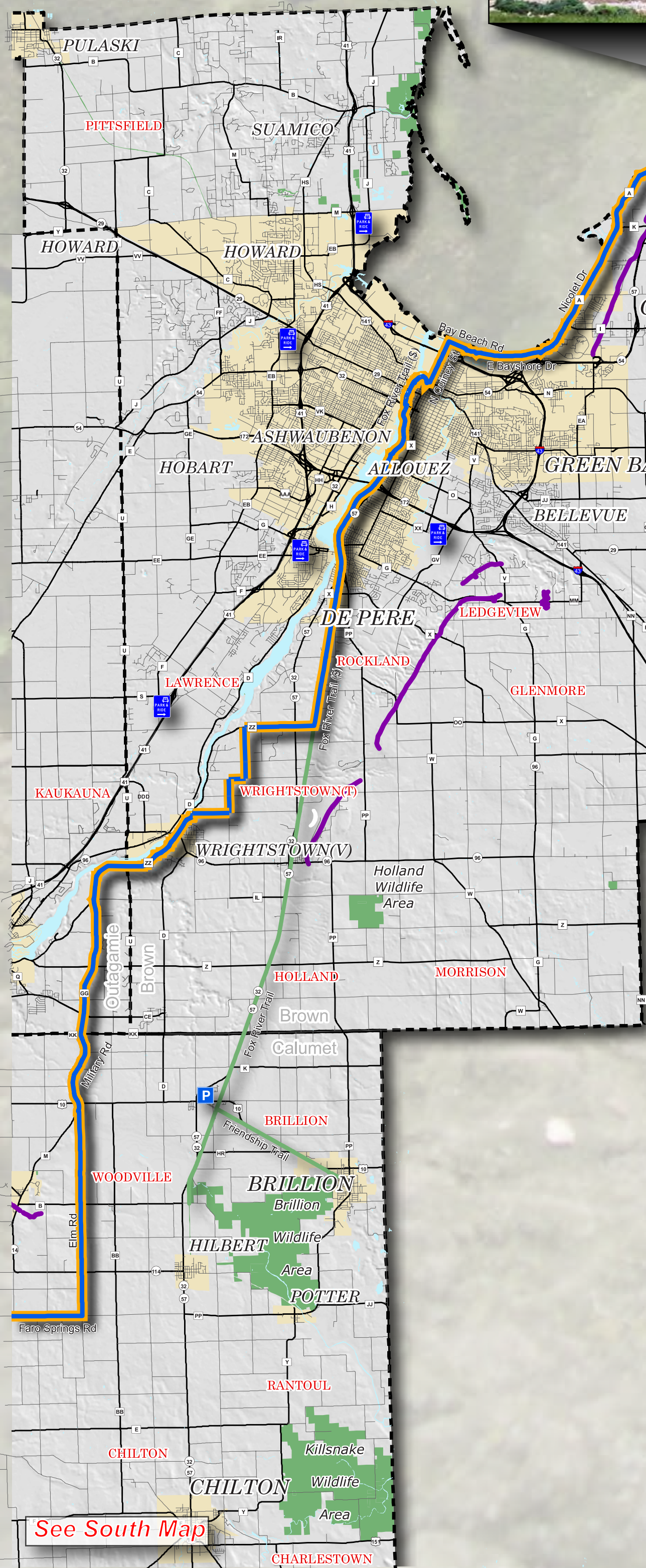
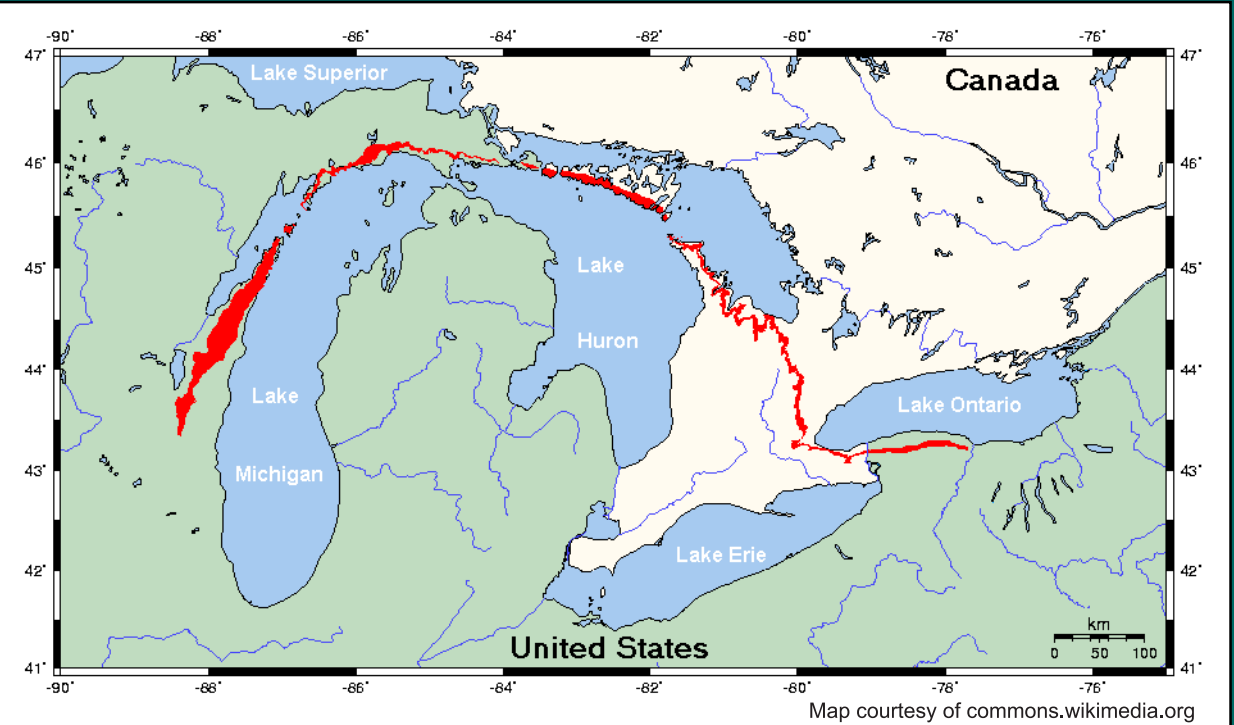
Data Sources:
 Base digital data provided by WDNR, Bay Lake RPC, ECWRPC.
 Escarpment Outcrop digitized by BLRPC, based on field data by J. Klansendorf & D. Mikulic, 2000.
 Great Arc Bike Route created by Greg Hines, Glacierland RCAD.
 Cartography by Adam Pfeifferle, ECWRPC.
 Graphics by Mike Zuege, ECWRPC.

What is the Niagara Escarpment ?

In Wisconsin, the Niagara Escarpment is a discontinuous rock ridge that stretches about 230 miles from Waukesha County north to Rock Island at the tip of Door County. It is highest along the western edge of Door County, where it reaches a height of about 250 feet above Green Bay. The term escarpment refers to the steep cliff edge of a cuesta, which is formed from slightly tilted layers of rocks. The steep cliff face forms when crumbly rocks, such as shale, are eroded from beneath harder rocks like limestone or dolomite, which then break off to make the cliff face. The Niagara Escarpment is globally significant and is home to many unique plants and animals, and it is an important source of groundwater and natural resources. For centuries, Native Americans considered the Escarpment a sacred place where they built burial mounds. The Escarpment is a much-beloved part of the landscape in Wisconsin, offering spectacular vistas, inviting scenery, and opportunities for reflection and recreation. If we protect and preserve it, future generations will be able to enjoy the Niagara Escarpment for years to come.

The Great Arc

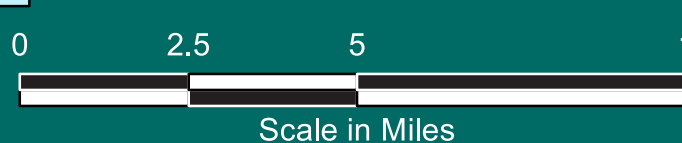
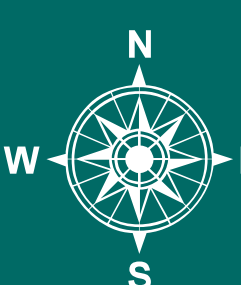
The 'Great Arc' is a term coined by Dr. Gordon Nelson, of University of Waterloo, Ontario and refers to the shape of the Niagara Escarpment at an international scale. While most people in Wisconsin are familiar with the cliffs that make up Door County, few people realize that the escarpment is a prominent landscape feature that spans nearly 1,000 miles in an arc across the Great Lakes region. This landform is referred to by some as the ancient "backbone" of North America. It runs from eastern Wisconsin to the Upper Peninsula of Michigan, across Manitoulin Island and the Bruce Peninsula as it snakes its way through southern Ontario to western New York State, where Niagara Falls cascades over it, giving the escarpment its name.



For a more detailed, interactive map go to the following websites:

- Main Route
<http://ridewithgps.com/routes/334553>
- East Alternate
<http://ridewithgps.com/routes/334187>
- Washington Island
<http://ridewithgps.com/routes/334100>

Prepared April 2011 by:
 East Central Wisconsin
 Regional Planning Commission
 400 Ahnaip Street, Suite 100
 Menasha, WI 54952
 (920) 751-4770
 (920) 751-4771 Fax
www.eastcentralrpc.org
staff@eastcentralrpc.org



- ★ Trail Head
- Ⓟ Park and Ride
- P Parking Lot
- Trails
- Escarpment Outcrop
- Alternate Route
- Mayville-Stockbridge
- Stockbridge-Sturgeon Bay
- Sturgeon Bay-Northport
- Washington Island
- DNR Managed Lands



General Bike Rules of the Road

- Ride at least three feet from the curb or parked vehicles or debris in curb area and in a straight line. Don't swerve in and out around parked vehicles.
- Always ride in the same direction as traffic.
- Sidewalk riding for bicyclists past the learning stage and being closely supervised by adults can be more dangerous than on the road, obeying traffic laws. It is also illegal unless the community has passed an ordinance specifically permitting sidewalk riding. This can be age-restricted, location-restricted or based on the type of property abutting the sidewalk.
- Obey all traffic laws.
- Be predictable! Let other users know where you intend to go and maintain an understood course.
- Consider wearing a helmet, bright colors, and take proper steps to ensure safety while biking this route.

For more information, please visit:

<http://www.dot.wisconsin.gov/safety/vehicle/bicycle/rules.htm>

Disclaimer

The Great Arc Bike Route is designed to be a general group of roads and trails, put together to enjoy the scenery that is the Niagara Escarpment in Wisconsin. Being prepared for the possibilities of equipment failure, finding lodging, parking, restaurants, and restroom facilities is left up to the individual bike rider. The creators of this map will take no responsibility for the possibility of injury, loss of property or any other negative factors while riding this route. This route may change over time.

See South Map